

PFCS EARLY HEAD START 2020 ANNUAL REPORT

January 1, 2020 – December 31, 2020

Professional Family Care Services Early Head Start Program of Cambria County successfully provided comprehensive services for low income pregnant mothers and children ages birth to three from January 2020 through December 2020. The Head Start Act of 2007 requires Early Head Start programs to make available program information at the end of each fiscal year. In compliance with federal regulations, PFCS has compiled this report to the public.

PROFESSIONAL FAMILY CARE SERVICES EARLY HEAD START

- EHS works with at-risk families to promote the developmental, health, educational, nutritional and social needs of families.
- EHS is a Federally-funded program with Professional Family Care Services serving as the grantee.
- Families enrolled and community support contributes a 20% match of the Federal funding as required by federal regulations.
- EHS is able to reach approximately 20% of eligible children in Cambria County.



Our Program Mission

Establishing trusting partnerships between the Early Head Start Program and families is the foundation of our program. As a family partnership, we strive to:

- enhance children's physical, social and emotional, language/communication, cognitive skills, and approaches to learning development
- support parents' efforts to fulfill their parental roles
- help parents move toward self-sufficiency and achieve their goals

Family Engagement

Families play a critical role in the development and learning of their children. Their support will lead to success in school and later in life. Early Head Start works with families to encourage their child's growth utilizing the Parent Family and Community Engagement as a tool. Parent, Family and Community Engagement means building relationships with families that support family well-being, strong parent-child relationships and ongoing learning and development of both parents and children.

Family Well-being- Parents and families are safe, healthy and have increased financial security.

- Families complete a safety checklist with their parent educator.
- Well child checks, immunizations, and pre-natal check-ups are monitored on an ongoing basis and the program maintains a high percentage of children receiving EPSDTs.
- Early Head Start families' progress is tracked by a family service worker who identifies the growth families have achieved while enrolled in Early Head Start.
- Monthly goals are set to support families' plans to maintain financial stability. They establish steps towards meeting their identified goals.
- During COVID, families were given the opportunity to utilize additional mental health services with additional funding from the government.

Positive Parent-Child Relationships- Beginning with transitions to parenthood, parents and families develop warm relationships that nurture their child's learning and development.

- Parent educators model and teach parents how to bond from birth and continue this relationship with their children throughout their lives.
- Ten children enrolled in the Early Head Start Program began with services to the pregnant mother over the last year.
- Thirty-six fathers participated in the program, socialization and policy council.



Families as Life-Long Educators- Parents and families observe, guide, promote, and participate in the everyday learning of their children at home, school and in the communities.

- Families complete activities between visits to support the goals of the school readiness plan.
- Early Head Start parents engage in activities by helping to plan projects.
- Parents of enrolled children attend community events which focus on the development of their children while engaging with others to support enrollment.

Family Engagement

Families as Learners- Parents and families advance their own learning interests through education, training and other experiences that support their parenting, career and life goals.

- **Early Head Start parents set goals to further their education by enrolling in GED classes or in secondary school.**
- **Families also set the goal of obtaining employment and create steps with their parent educator to achieve this goal.**
- **The Early Head Start Program offers trainings throughout the year for families such as: CPR and First Aid, Early Intervention, Healthy Relationships, Money Management and Health Trainings.**

Families as Advocates and Leaders- Parents participate in leadership development, development of program policy and organized activities to improve children's development and learning experiences.

- **Parents of enrolled children participate in policy council which makes decisions on the areas of the program such as annual budget, program planning, operations, personnel, policies, and procedures.**



Families' Engagement in Transitions- Parents and families support and advocate for their child's learning and development as they transition to new learning environments.

- **Early Head Start parents completed the life skills progression to identify readiness.**
- **Parents of enrolled children with disabilities received services to support their child's individual developmental needs.**



Families' Connections to Peers and Community- Parents and families form connections with peers and mentors in formal and informal social networks that are supportive and/or educational.

- **Early Head Start parents sit on the policy council. This has provided them with the self-confidence to volunteer. Many former Early Head parents have worked in various capacities with the local Head Start Program.**
- **Parents have made connections through socialization and policy council which have created partnerships in which the parents have supported each other's needs.**

Family Services	
Mental Health Services	32
Car Seat Loans	12
Emergency Crises	47
Transition to Head Start, Preschool, Other	25

Services	
Total number of women & Children served	119
Funded Enrollment	72
Average monthly enrollment as a Percentage of funded enrollment	100%

Medical and Dental	
Percentage of children receiving medical exams	100%
Percentage of children receiving dental exams	87%

All families enrolled in the EHS Program receive parenting, health, and pedestrian safety training.

Disability	
Total children served	20
Children who had prior services	11
Children diagnosed after enrollment	9
Percentage of children served	17%

Race and Ethnicity	
White	67
African American	29
Multi-Racial	21
Other	2
Non-Hispanic	114
Hispanic	5



School Readiness

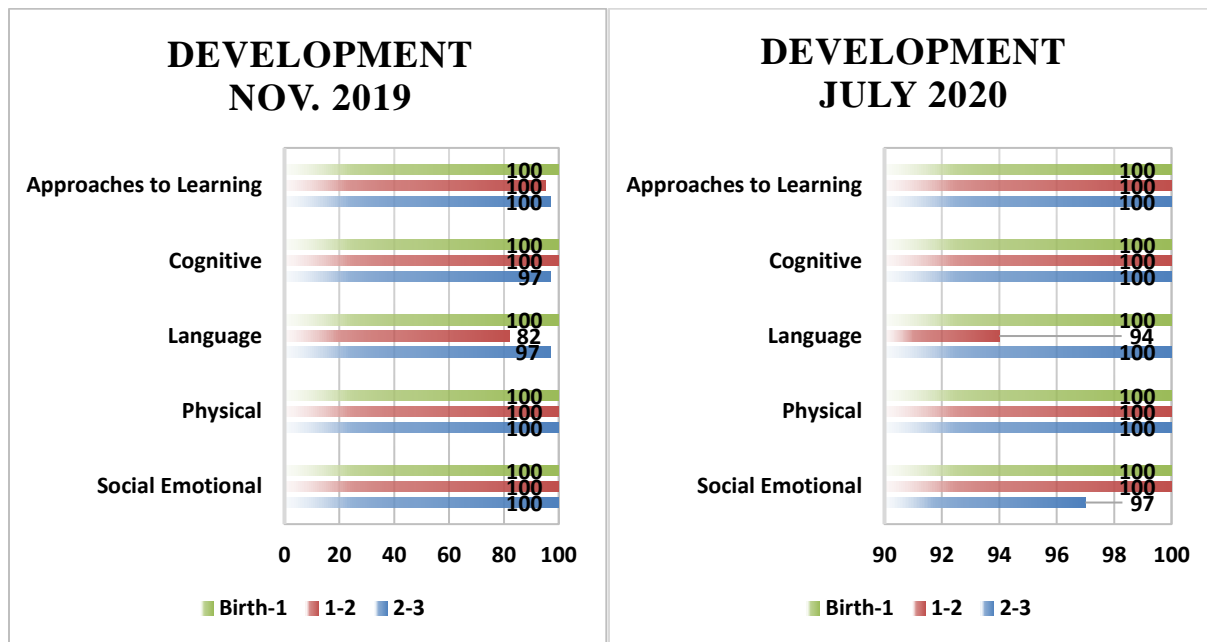
Child Outcomes Progress

For the Program Year beginning August 16, 2019, child assessments were completed in November 2019, March 2020, and July 2020. The program analyzes developmental outcomes for individual children and the program as a whole to determine if all children are making progress towards school readiness goals and to make program improvements. The progress shown reflects those children who were tested in all assessment periods. It does not reflect late enrollees and children who withdrew from the program mid-year. The graph below displays the percentage of children who met or exceeded the widely held expectation for their age at each checkpoint.



School Readiness Data

The following comparison charts were created using the Ounce Assessment tool analyzing progress made in each of the five developmental areas for thirty-four children.



*In the comparison chart above, most of the areas show improvement from the last assessment. It should be noted that the area of communication continues to be a focus of the Early Head Start Program. Goals are set with families around language development. In the area of language, the children who were not developing as expected were either referred to or were receiving Early Intervention services at the time of the assessment. During COVID, families have received books to support language development.



Enrollment Based on Eligibility



Response to COVID-19

In March of 2020, the Early Head Start home visits were suspended due to the worldwide pandemic COVID-19. Parent Educators continued contact with all enrolled families. Support was given to families as needed with referrals, especially to food sources. The community had several food distributions that allowed families to get much needed food during the pandemic.

It was identified by staff that the families were having difficulty obtaining other items during 2020. Community resources became scarce due to businesses being closed and families were struggling in many ways. The parent educators continued to monitor and identify what needs were not met during this year. They worked in partnership with the families to ensure that they were getting everything they needed to sustain their health and wellness during the quarantine.

In 2020, the CARES Act provided additional funding to Head Start and Early Head Start programs across the nation to help programs adapt to the challenges presented by COVID-19 and continue to meet the needs of the families they serve. Based on enrollment, PFCS EHS was awarded \$63,274 supplemental funding.

2020 COVID-19 Spending Plan

Equipment & Supplies need to support remote delivery of program services	\$ 5,000
Educational Supplies for service delivery	\$52,274
Meals & Snacks not reimbursed by USDA	\$ 5,000
Training and Professional Development for Staff related to preventing, preparing for and responding to COVID-19	\$ 1,000
Total	\$63,274

As of 12/31/2020, the program has spent \$21,949.97 of the supplemental COVID-19 funds awarded.

Equipment & Supplies need to support remote delivery of program services	\$ 3,759.16
Educational Supplies for service delivery	\$13,448.63
Meals & Snacks not reimbursed by USDA	\$ 200.00
Training and Professional Development for Staff related to preventing, preparing for and responding to COVID-19	\$ 4,542.18
Total	\$21,949.97

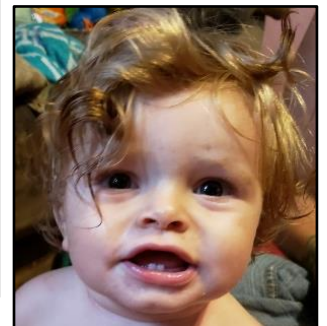
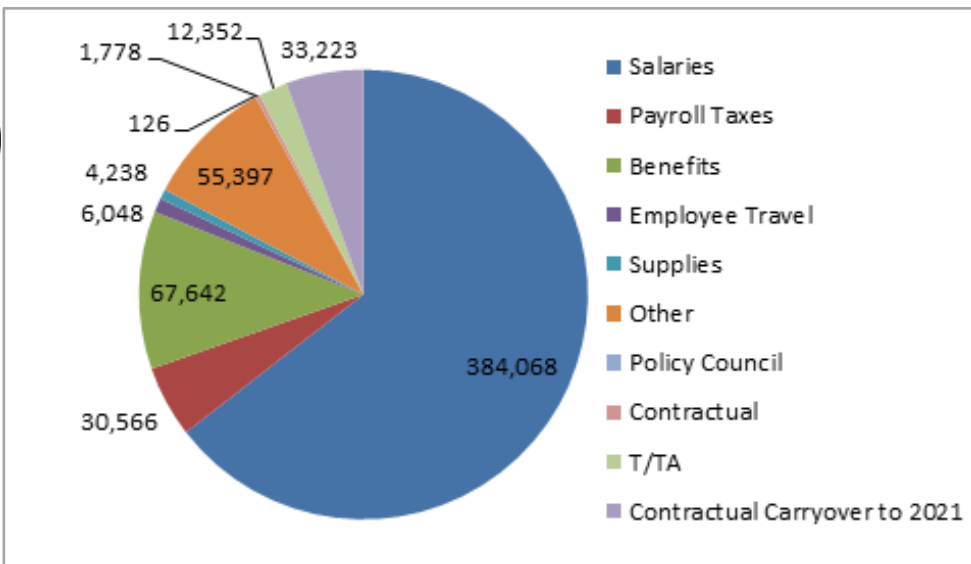
2020 Budget

Federal Funds	\$ 595,438
Non-Federal Share (Match)	\$ 148,860
Total Operating Budget	\$ 744,298

2020

Non-Federal Share

The Non-Federal share/in-kind match requirement is 25% of the total grant award. For 2020, a minimum of \$148,860 match was required. The program far exceeded the required amount; \$256,097 Non-Federal share was generated through donations of time. Over 99% of the program's total Non-Federal share was generated by parents' investments of volunteer time.



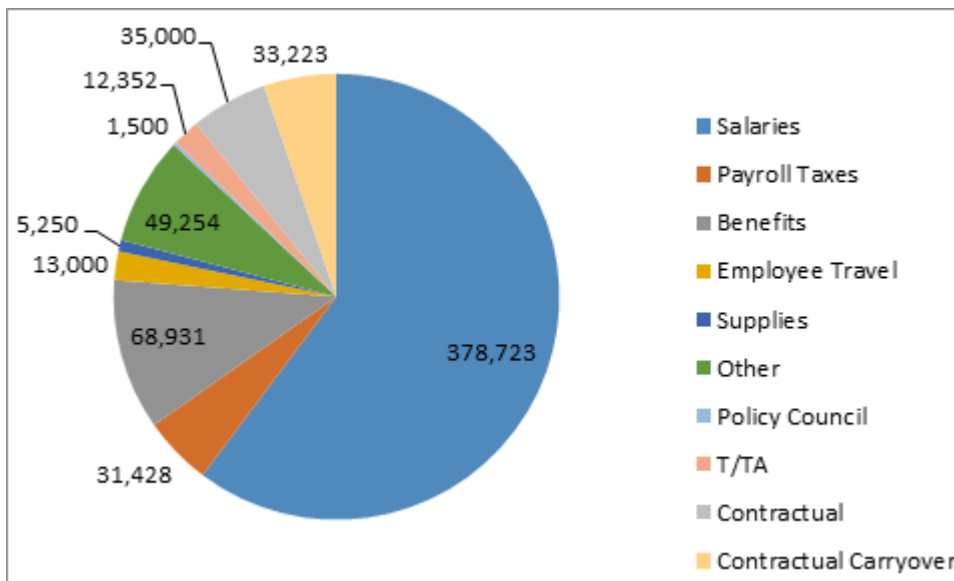
PFCS had no findings in the 2020 Audit Report.

Funding & Fiscal

2021 Projected Budget

Federal Funds	\$ 628,661
Non-Federal Share (Match)	\$ 157,165
Total Operating Budget	\$ 785,826

2021



Results of the Federal Monitoring Review

The Office of Head Start (OHS) conducted an on-site focus area two review of our Early Head Start Program in December 2017 to determine if we were in full compliance with all Head Start Program Performance Standards, laws, regulations, and policy requirements. There was one area of concern in financial management. A vision screener which was required for evidence-based screenings was not pre-approved by the Office of Head Start. There has since been a retroactive approval made, correcting this issue. There were no findings in any other areas of the program.